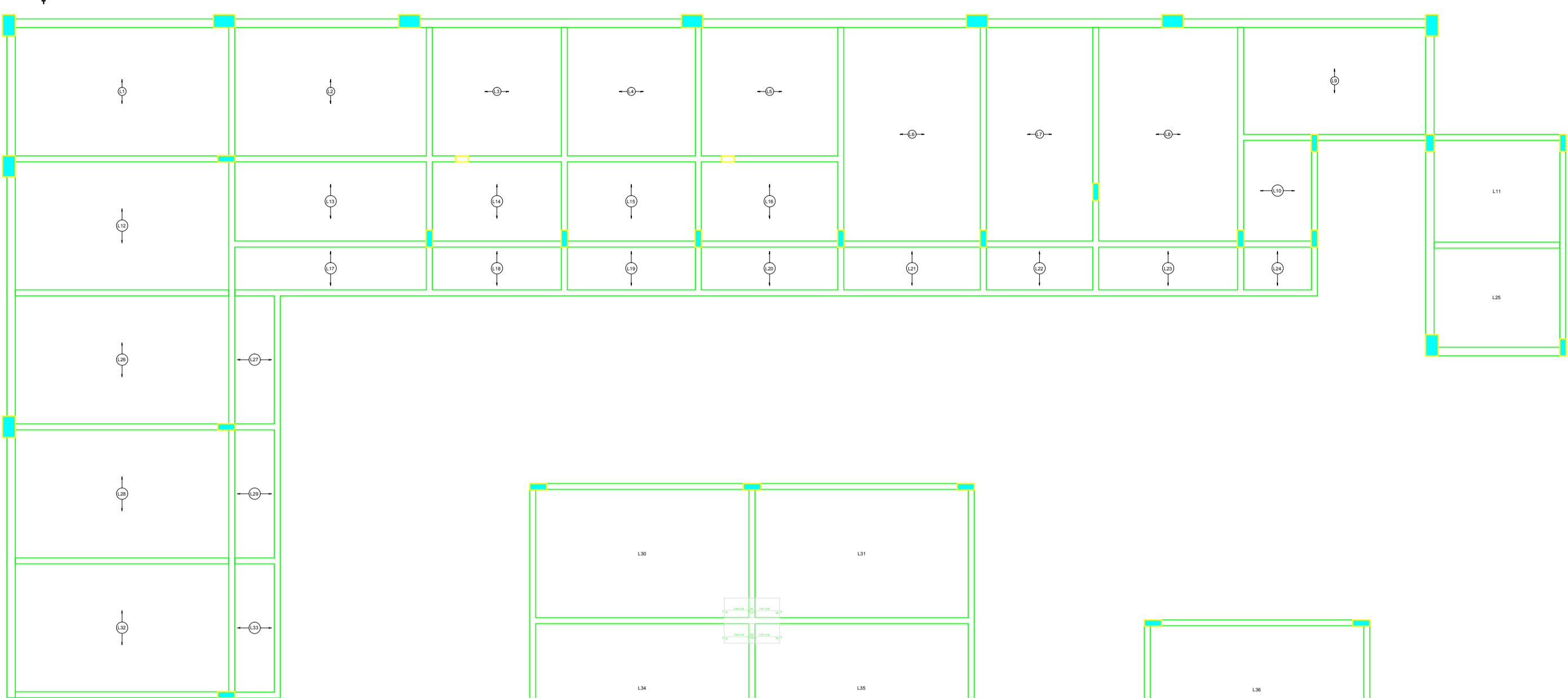
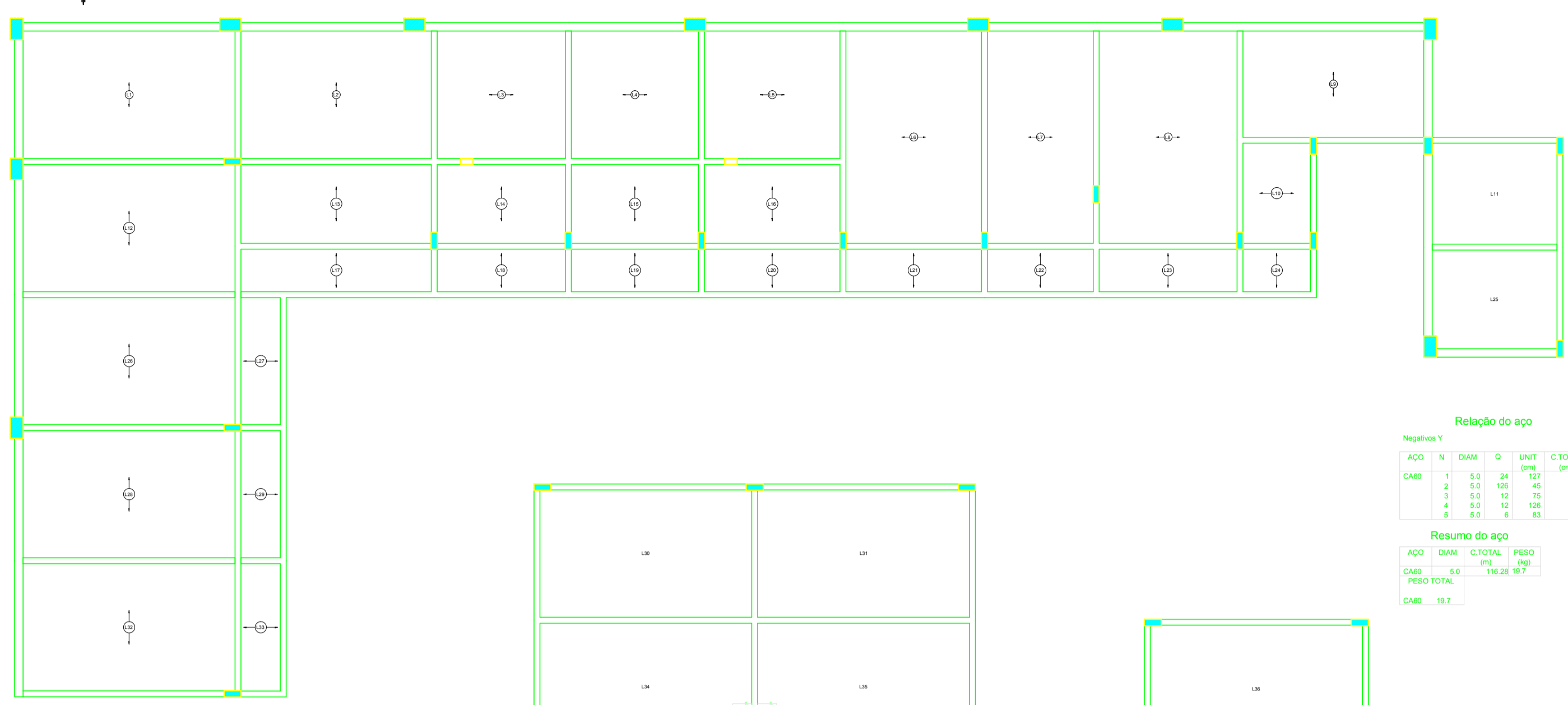


Armação negativa das lajes (Eixo X)



Armação negativa das lajes (Eixo Y)



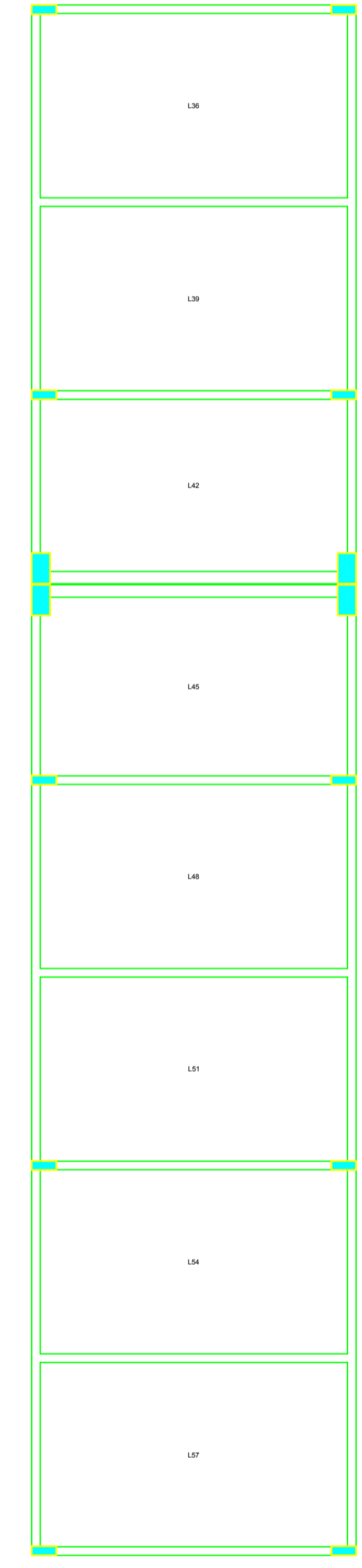
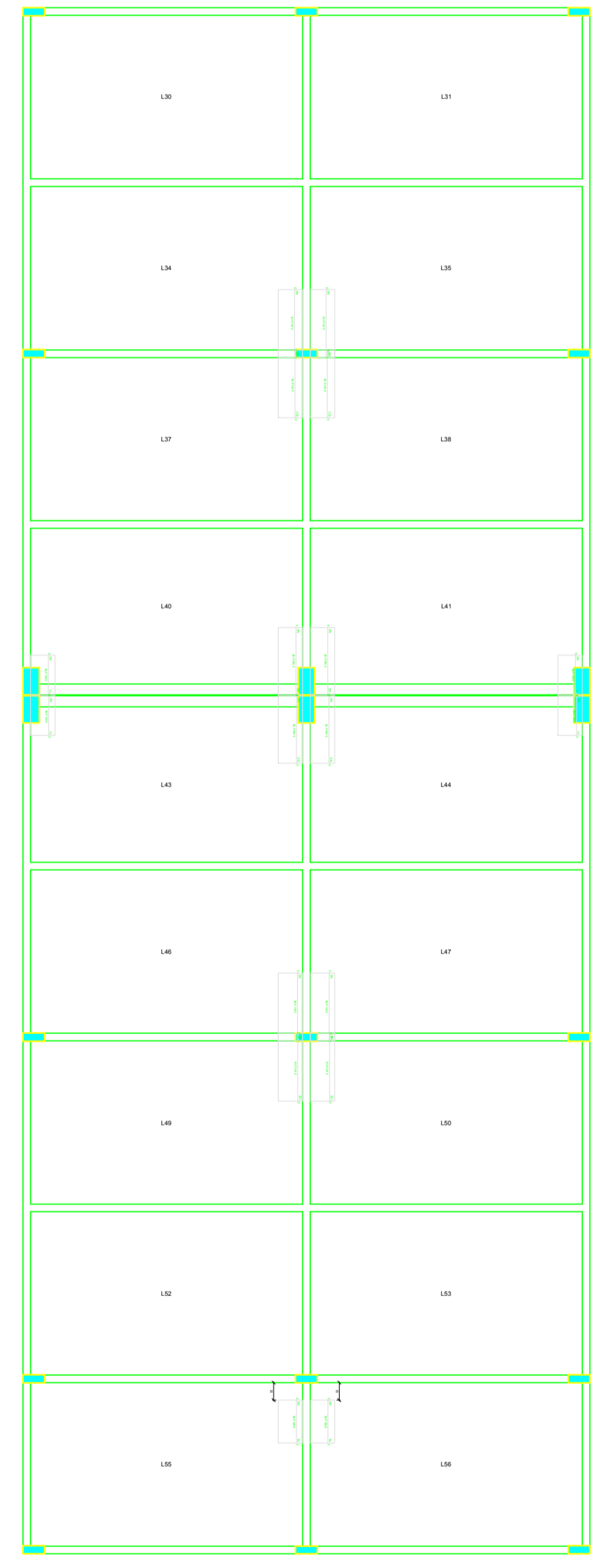
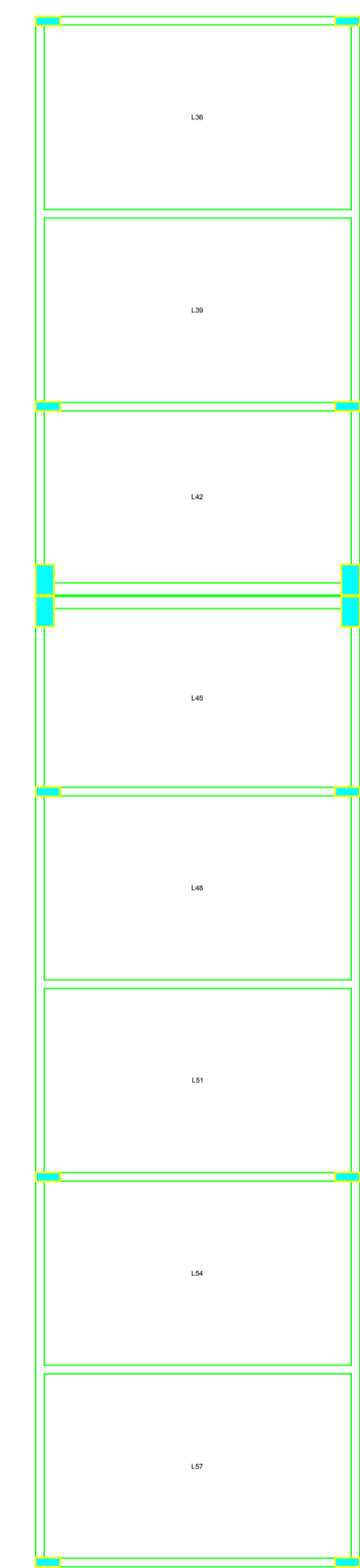
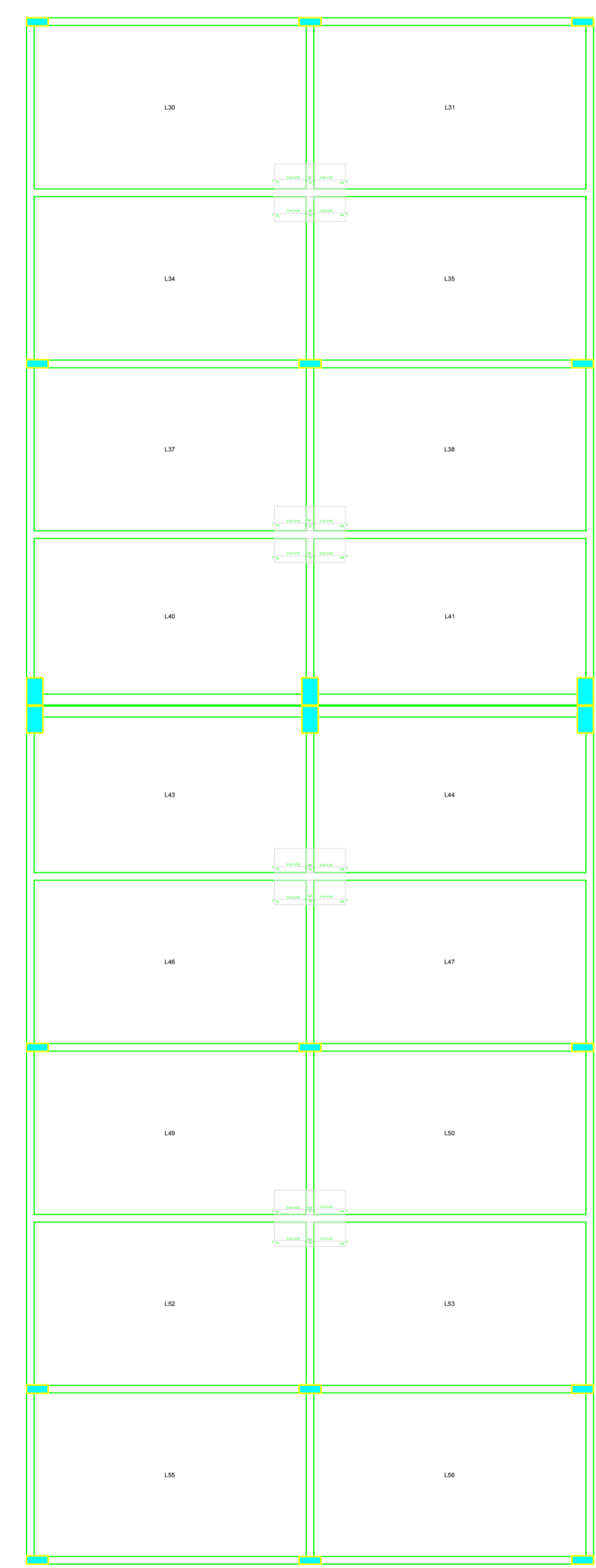
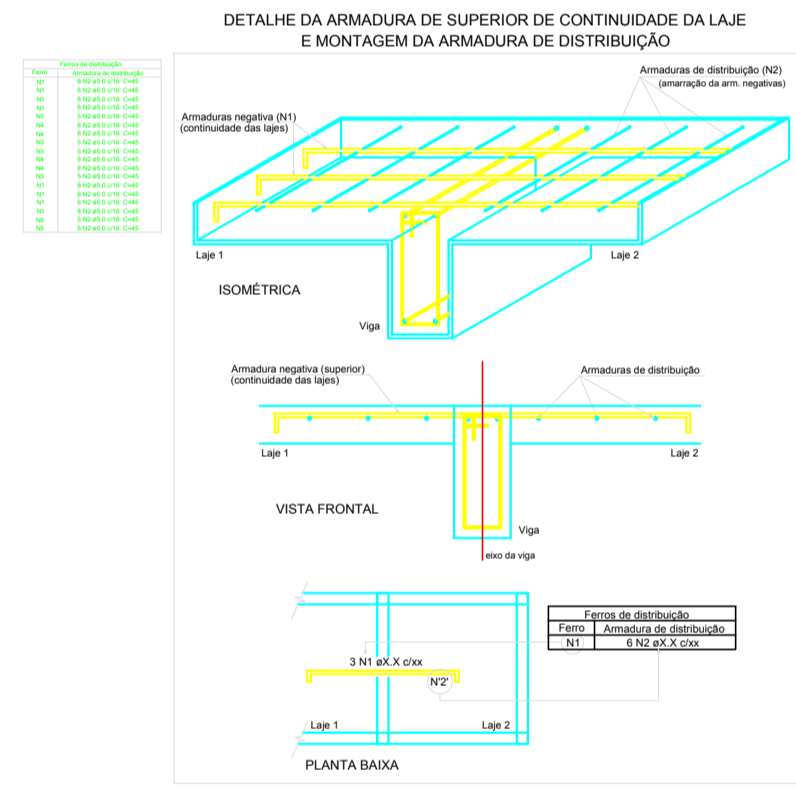
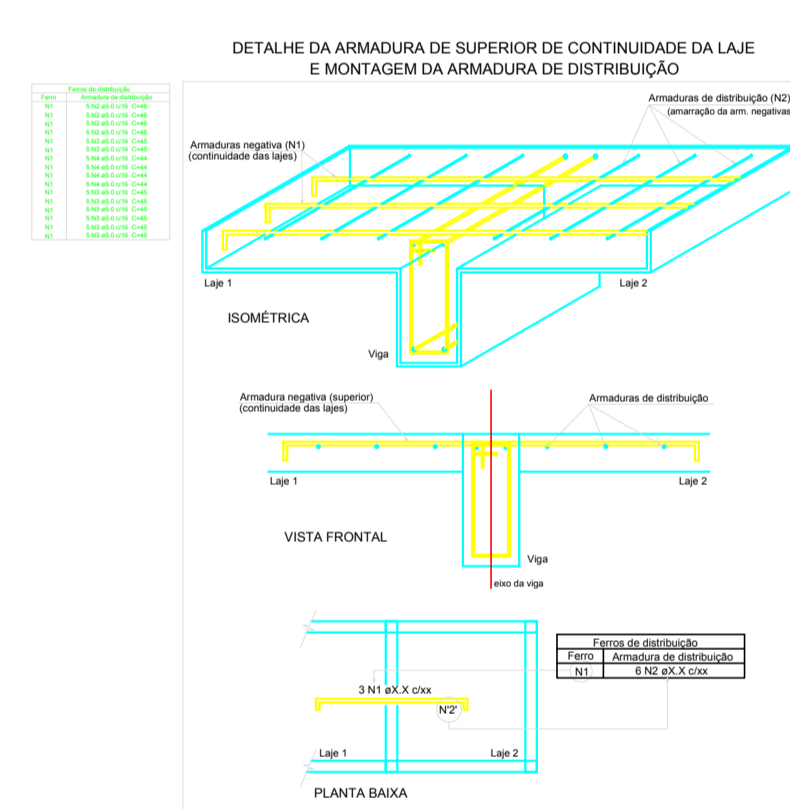
**Relação do aço**

Negativos Y

AÇO	N	DIAM	Q	UNIT (m)	C.TOTAL (m)	PESO (Kg)
CA60	1	5,0	24	127	3048	
	2	5,0	28	42	1680	
	3	5,0	12	75	900	
	4	5,0	12	126	1812	
	5	5,0	6	83	498	
<b>PESO TOTAL</b>					<b>118,28</b>	<b>18,7</b>

**Resumo do aço**

AÇO	DIAM	C.TOTAL (m)	PESO (Kg)
CA60	5,0	118,28	18,7
<b>PESO TOTAL</b>			<b>18,7</b>



**Relação do aço**

Negativos X

AÇO	N	DIAM	Q	UNIT (cm)	C.TOTAL (cm)
CA60	1	5,0	48	74	3552
	2	5,0	20	46	920
	3	5,0	40	46	1800
	4	5,0	20	44	880

**Resumo do aço**

AÇO	DIAM	C.TOTAL (m)	PESO (Kg)
CA60	5,0	71,6	11
<b>PESO TOTAL</b>			<b>11</b>

PROJETO: MERCADO MUNICIPAL	PREFEITO MUNICIPAL: ITONIR APARECIDO TAVARES	ESCALA: INDICADA	UNIDADE: METROS	DATA: NOVEMBRO/2021
PROPRIETÁRIO: PREFEITURA MUNICIPAL DE JACUNDÁ/PA	CNPJ: 00.854.833/0001-80	ASSUNTO: - DETALHE ARMAÇÃO NEGATIVA DAS LAJES: EIXOS X/Y - NÍVEL +320.		A. TERRENO: 3.887,50M <sup>2</sup> A. CONSTRUIDA: 2.127,74M <sup>2</sup>
LOCAL: RUA SANTA ROSA, S/N, CENTRO JACUNDÁ - PA	RESP. TÉCNICO:	TIPO DO PROJETO: ESTRUTURAL	PRANCHA: 11/18	TAXA DE OCUP: 70,12%
DIEGO LUCENA DE SOUZA - INSC. Nº 1515883391 ENGENHEIRO CIVIL				

